

**ene**

ENE TECHNOLOGY INC.



# EXPRESS & EXCELLENCE

# ENE SOLUTIONS OVERVIEW



## 1. ENE Inspector

**High-Mobility Tactical UAV** | Compact 2kg drone reaching speeds of 72 km/h (20m/s) for rapid arrival and high-speed target tracking.

**Superior Aerial Vision** | Equipped with a tri-sensor gimbal featuring a 1 km laser rangefinder and 640x512 high-resolution thermal imaging.



## 2. ENE Scout

**Lightweight & Agile** | MTOW < 2kg lightweight design with Level 7 wind resistance for rapid deployment in any environment.

**Cyber-Secure Intelligence** | Certified with TTC Intermediate Level cybersecurity, ensuring absolute data protection for sensitive missions



## 3. ENE Surveyor

**AI-Driven ISR** | Integrated onboard AI computing for real-time target recognition and scalable autonomous performance.

**Enhanced Payload Capacity** | Compact frame supporting 500g payloads, including tri-spectral cameras and LiDAR for precision inspection.



## 4. ENE Mapper

**Unified Command & Control** | Portable GCS with 16-channel control and a dual-band 7 km high-definition (1080P) secure visual link.

**Extended Field Operations** | Features an 8-hour battery life and a 1000-nit sunlight-readable screen for reliable all-day mission management.



## 5. ENE Guardian

**Safety First Redundancy** | 6-axle and dual-battery redundancy ensures a safe return even during single-point power or motor failure.

**Industrial Powerhouse** | 5 kg payload capacity with a 25 km flight range, optimized for heavy equipment and long-distance surveying.

# ENE SOLUTIONS OVERVIEW



## 6. ENE Ranger

**Ultimate Endurance eVTOL** | Long-range eVTOL offering 180 minutes of airtime and a 200 km mission range for massive area coverage.

**Multi-Mission Versatility** | Supports 5 kg payloads including full-frame cameras, LiDAR, and communication repeaters for diverse operations.



## 7. ENE Ranger 2SE

**Compact Long-Range Specialist** | 160 minutes of endurance and 150 km range in a quick-release, portable design for fast field deployment.

**Precision Geospatial Mapping** | 2 kg mission payload capacity, ideal for full-scale mapping, disaster prevention, and water resource surveys.



## 8. ENE Titan

**The Payload Giant** | Unmanned helicopter with an extraordinary 16 kg payload capacity, designed for heavy-lift logistics and transport.

**Stabilized Thermal Insight** | Equipped with a dual-sensor (Laser/Radar) altitude hold system and real-time infrared thermal data display.



## 9. ENE Commandos

**Tactical Long-Range Recon** | Ultra-long 20 km data link with 50-minute endurance, pushing the boundaries of remote surveillance.

**Tri-Sensor Precision** | Integrated EO/IR/Laser rangefinder combined with RTK centimeter-level positioning for absolute mission accuracy.



## 10. ENE Cultivator

**Precision Agricultural Solution** | High-efficiency 16L liquid and granular spreading system with a 12m swath for optimized crop management.

**All-Weather Durability** | Features IP67-rated spreading modules and IPX7 waterproof motors, allowing for easy maintenance and water-wash cleaning.

# ENE Inspector

High-Precision ISR Intelligence UAV



**Tri-Sensor Gimbal**

EO / IR  
Laser Rangefinder



**RTK**

Centimeter-Level  
Positioning



**High-Mobility**

Max Speed 72km/h

**Swift Response, Absolute Precision**

# ENE Inspector



## Key Features



### Triple-Vision Capability

Integrated tri-sensor gimbal featuring thermal imaging and a 1km laser rangefinder for precise all-weather detection.



Indoor Inspection



### High-Speed Deployment

Achieves a top speed of 72km/h (20m/s) to ensure rapid arrival at mission-critical locations.



### Precision Stability

Advanced RTK technology and 4-axis stabilization maintaining a hover accuracy of  $\pm 0.5m$ .



Law Enforcement & Surveillance



### Rugged Endurance

Engineered for 27 minutes of flight time with Level 6 wind resistance and IP43 protection for reliable outdoor use.



Infrastructure Inspection



### Intelligent Computing

High-performance onboard computing and automatic flight modes supporting advanced autonomous operations.



## SPECIFICATION

Specification	Data
Function	Reconnaissance / inspection
Type	Multicopter
Configuration	Quadcopter (4 rotors)
Payload Options	EO/IR; tri-sensor (visible/thermal) + laser rangefinder (5 m–1 km)
Battery	4800 mAh (LiPo 6S)
Max Takeoff Weight	2.05 kg
Max Flight Time	27 min
Wheelbase	395 mm (motor axis distance)
Speed	20 m/s (72 km/h)
Wind Resistance	12 m/s (Beaufort 6)
Max Ascent Speed	5 m/s
Max Descent Speed	3 m/s
Dimensions Folded	—
Dimensions Unfolded	550×488×246 mm

# ENE SCOUT

## Lightweight Miniature UAV



**Cybersecurity**

TTC Intermediate Level



**Level 7**

(13.9-17.1 m/s)  
Wind Speed Resistance



**MTOW < 2kg**

Lightweight  
Functional UAV

## Agility & Insight

# ENE SCOUT

## Core Certifications

Type Certificate: CAA | Cybersecurity: TTC Intermediate Level | Wireless Communication: NCC



### Key Features



#### All-Round Protection

Level 7 wind resistance and IP55 protection for all-weather reliability.



#### Lightweight & Portable

Tool-free foldable design with a hard-shell case for rapid field deployment.



#### Smart Fast Charging

MIT smart battery with multi-safety protection; charges to 90% in 50 mins.



#### One-Click Return

Auto-return for low battery, signal loss, or via one-click command.



#### Intelligent Autonomous Flight

SGC software for automated mission planning and route optimization.



Surveying



Environmental Monitoring



Search and Rescue



### SPECIFICATION

Specification	Data	
Function	Reconnaissance, basic inspection	
Type	Multirotor	
Configuration	4 axles, 4 propellers	
Payload Options	EO/IR	
Battery	10000 mAh	
Max Takeoff Weight	1.99 kg	
Max Flight Time	35 min (no payload) / 32 min (EO payload)	
Max Flight Distance	15 km	
Ceiling Altitude	5000 m (sim) / 3000 m (field)	
Control Range	7 km	Dimensions Folded 340×220×175 mm
Speed	22 m/s (72 km/h)	Dimensions Unfolded 445×440×150 mm
Wind Resistance	Beaufort 7 (13.9–17.1 m/s)	Max Ascent Speed 6 m/s
Wheelbase	580 mm	Max Descent Speed 3 m/s

# ENE Surveyor

ISR AI UAV



**Cybersecurity**

TTC Intermediate Level



**500g Capacity**

High Payload



**IP55**

Water & Dust Test (TAF)

**Instant Reaction, Maximum Safety**

# ENE Surveyor

## Core Certifications

CAA / Cybersecurity : TTC Intermediate Level / Wireless Communication : NCC



### Key Features



#### Multi-Mission

Compact design with high payload capacity supports advanced sensors like tri-spectral cameras and LiDAR.



Traffic Monitoring



#### AI Control

Integrates with onboard AI computers for real-time processing, smart control, and scalable performance.



Search and Rescue



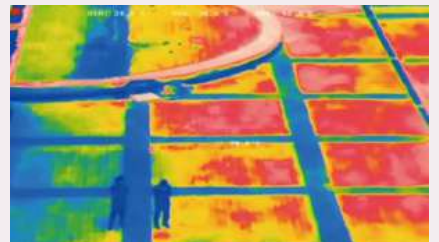
#### Protection

Wind resistance up to level 6, and IP55 protection enable adaptable to various environments.



#### Intelligent Power

Over-heating and short-circuit protection and 50-min fast charging to 70%.



Environmental Monitoring



#### Rapid Deployment

Foldable propellers and tool-free arms with an integrated hard-shell case for grab-and-go convenience.



### SPECIFICATION

Specification	Data	
Function	Search & rescue (rain capable), AI reconnaissance	
Type	Multirotor	
Configuration	4 axles, 4 propellers	
Payload Options	EO/IR	
Battery	15000 mAh	
Max Takeoff Weight	4 kg	
Max Flight Time	45 min (no payload) / 30 min (500 g payload)	
Ceiling Altitude	5000 m (sim) / 3000 m (field)	
Control Range	7 km	Max Payload 500 g
Max Flight Distance	20 km	Dimensions Folded 375×220×180 mm
Speed	20 m/s (72 km/h)	Dimensions Unfolded 700×650×200 mm
Wind Resistance	Beaufort 6 (10.8–15.8 m/s)	Max Ascent Speed 6 m/s
Wheelbase	580 mm	Max Descent Speed 3 m/s

# ENE Mapper

## High-Efficiency Surveying UAV



**TTC**

**Cybersecurity  
(Intermediate Level)**



**GNSS / RTK / PPK**

**High-Precision  
Positioning**



**>30 min**

**Operational Time**

**Surveying Leadership, Freedom to Fly**

# ENE Mapper

## Core Certifications

CAA / Cybersecurity : TTC Intermediate Level / Wireless Communication : NCC



### Key Features



#### Smart Flight

Integrated mission management and smart route planning to maximize operational efficiency and flight safety.



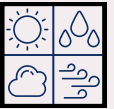
#### One-Key Return

Automatic Return-to-Home (RTH) triggered by low battery or signal loss for complete mission security.



#### High-Precision Positioning

GNSS/RTK/PPK dual-mode system delivering centimeter-level accuracy for professional surveying and mapping.



#### All-Weather Protection

High-grade wind resistance and robust design engineered for stability in unpredictable environments.



#### Intelligent Endurance

MIT high-performance 590Wh+ batteries providing up to 40 minutes of flight time for extended missions.



Cadastral Surveying



Earthwork Measurement



3D Modeling



### SPECIFICATION

Specification	Data	
Function	Surveying / inspection; engineering supervision; mapping; urban planning	
Type	Multirotor	
Configuration	Quadcopter (4 rotors)	
Payload Options	Survey camera; GNSS/RTK/PPK; mapping (2D/3D)	
Battery	6S4P 20000 mAh	
Max Takeoff Weight	8 kg	
Max Flight Time	40 min (no payload) / 35 min (1 kg payload)	
Ceiling Altitude	5000 m (sim) / 3000 m (field)	
Control Range	7 km	Max Payload 2 kg
Max Flight Distance	20 km	Dimensions Folded 485×380×437 mm
Speed	20 m/s (72 km/h)	Dimensions Unfolded 845×846×437 mm
Wind Resistance	Beaufort 7 (13.9–17.1 m/s)	Max Ascent Speed 5 m/s
Wheelbase	680 mm	Max Descent Speed 3 m/s

# ENE Guardian

## Smart Aerial Solution



**TTC**

**Cybersecurity  
Accreditation**



**Level 7**

**(13.9–17.1 m/s)  
Wind Speed Resistance**



**50 MIN**

**Max Flight Time**

**FLY EVERYWHERE, MASTER ANYTHING**

# ENE Guardian

## Core Certifications

CAA / Cybersecurity : TTC Intermediate Level / Wireless Communication : NCC



### Key Features

#### Safety First



Dual-battery, six-axis redundancy ensures safe return even if one power source fails. Military-grade tested for reliable takeoff and landing.

#### Mission-Ready



Supports EO/IR and LiDAR sensors with modular design for quick-swap capabilities—built for versatility.

#### Extended Flight



Up to 50 minutes of airtime with quick-swap batteries to reduce downtime and expand mission range.

#### Dual RTK

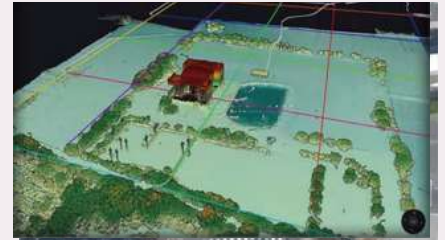


Millimeter positioning with dual RTK, ensuring accurate navigation even near buildings or interference zones.

#### Mountain & Coastal Mastery



High-torque system with wind-resistance algorithms enables stable hover in Level 7 winds



LiDAR Point Cloud



Maritime Rescue



Oblique Photography



### SPECIFICATION

Specification	Data	
Function	Advanced surveying, maritime SAR	
Type	Multicopter	
Configuration	6 axes, 6 propellers	
Payload Options	Full-side Camera / LiDAR / oblique cameras	
Battery	20000 mAh (dual)	
Max Takeoff Weight	14 kg	
Max Flight Time	50 min (no payload) / 30 min (2 kg payload)	
Ceiling Altitude	5000 m (sim) / 3000 m (field)	
Control Range	5 km	Max Payload 5 kg
Max Flight Distance	25 km	Dimensions Folded 520×500×466 mm
Speed	20 m/s (72 km/h)	Dimensions Unfolded 1250×1450×466 mm
Wind Resistance	Beaufort 7 (15.9–17.1 m/s)	Max Ascent Speed 5 m/s
Wheelbase	990 mm	Max Descent Speed 3 m/s

# ENE Ranger

## Long-Range eVTOL



**Cybersecurity**

TTC Intermediate Level



**>180min**

Max Flight Time  
>200km Range



**>5kg**

Multi-mission Payloads

**Distance Master, Load Carrier.**

# ENE Ranger

## Core Certifications

CAA / Cybersecurity : TTC Intermediate Level / Wireless Communication : NCC



### Key Features



#### Multi Mission

Modular payloads support enables the platform for recon, mapping, logistics, and inspection.



#### Always Connected

Stay connected without interruption for recon, mapping, and logistics, remote operations or critical missions.



#### Precision Payloads

Equipped with full-frame, LiDAR, or tri-sensor cameras for mapping and collection of high-precision data.



#### Extended Endurance

Up to 180 minutes of flight and 200 km range for long-haul patrol, survey, and transportation.

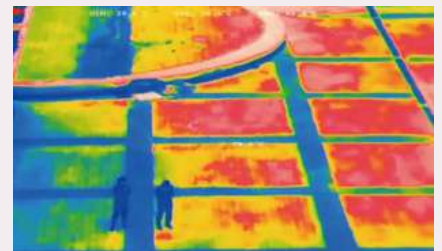


#### Anywhere Anytime

High anti-wind and long-range control for stable performance in tough environment conditions.



Logistics



Inspection



Communication



### SPECIFICATION

Specification	Data	
Function	Long-range logistics, border reconnaissance	
Type	VTOL Fixed-Wing	
Configuration	Electric power system (4+1), push-back motor	
Payload Options	Airdrop system; Tri-sensor cameras; Full-frame/Oblique camera; LiDAR; Communication repeater	
Battery	12S 25000 mAh ×2	
Speed	Flight 120 km/h; Cruise 80 km/h	
Ceiling Altitude	4000 m	
Control Range	Remote control >60 km; 4G/5G & satellite transmission	
Max Flight Distance	200 km	Max Takeoff Weight 24.9 kg
Max Flight Time	180 min	Max Payload 5 kg
Wind Resistance	Beaufort 6	Dimensions Folded —
Wheelbase	Wingspan 3500 mm	Dimensions Unfolded 1900×3500×660 mm

# ENE Ranger 2SE

Compact Long-Range eVTOL



**>160min**

**Max Flight Time**

**150K**

**>150km**

**Range**



**>2kg**

**Multi-mission Payloads**

**Intelligent Mapping, Visionary Exploration**

# ENE Ranger 2SE

## Core Certifications

CAA / Cybersecurity : TTC Intermediate Level / Wireless Communication : NCC



### Key Features



#### Compact & Deployable

Lightweight, quick-release design fits easily into a small case. Single-operator ready for fast, mobile deployment.



#### Extended Flight Mission

Up to 160 minutes of airtime and 150 km range—ideal for long-range surveillance, patrol, and SAR missions.



#### Versatile Payload Options

Multi-Mission Support: Quick-swap compatibility for Full-Frame cameras, LiDAR, and Tri-spectral sensors.



#### Long-Range Control

10km Secure Link: Standard 10km range with integrated Auto-RTH and fail-safe flight protection.

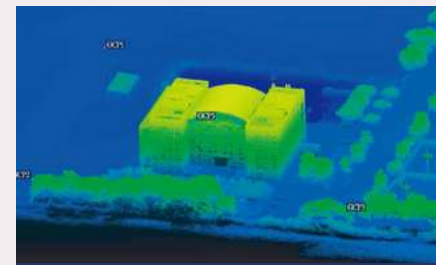


#### Stable in Strong Winds

Conquer Level 7 Winds: Reliable all-weather performance for mission-critical stability.



Surveying



Research Study



Disaster Inspection



### SPECIFICATION

Specification	Data	
Function	Wide-area mapping, disaster-prevention patrol	
Type	VTOL Fixed-Wing	
Configuration	Electric power system (4+1), push-back motor	
Payload Options	Full-frame/Oblique camera; LiDAR; Tri-sensor cameras	
Max Takeoff Weight	14 kg	
Battery	12S 15000 mAh ×2	
Speed	Flight 120 km/h; Cruise 80 km/h	
Ceiling Altitude	4000 m	
Control Range	Remote control >10 km (Std) / 60 km (Option)	
Max Flight Distance	150 km	
Max Flight Time	160 min	Max Payload 2 kg
Wind Resistance	Beaufort 6 (10.8–13.3 m/s)	Dimensions Folded —
Wheelbase	Wingspan 2500 mm	Dimensions Unfolded 1400×2500×425 mm

# ENE Titan

## Heavy Lift Unmanned Helicopter



**Heavy Lift**

30kg / 16kg  
(MTOW / Max Payload)



**Dual Sensors**

Laser &  
Millimeter-Wave Radar



**Level 6**

Wind Speed Resistance  
11m/s

**Heavy Lift, Steady Insight**

# ENE Titan

## Core Certifications

Factory Test Report Included | 5G Ready Communication | Custom Optical/Thermal Specs



### Key Features



#### High Payload Capacity

Supports up to 16kg max payload for heavy-duty sensors or transport missions.



#### All-Weather Protection

IP44 rated with 11m/s wind resistance; operates reliably from -10°C to 50°C.



#### Smart Sensing & Safety

Integrated LiDAR and millimeter-wave radar for precise altitude hold and obstacle avoidance.



#### High-Endurance Power

22,000mAh smart battery with quick-swap design and real-time voltage monitoring.

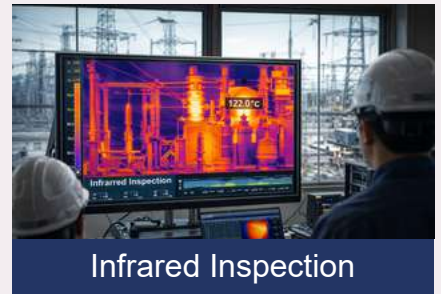


#### Intelligent Monitoring Software

Win10 compatible system supporting real-time HDR imaging and IR thermal data display.



Search and Rescue



Infrared Inspection



Heavy Logistics



### SPECIFICATION

Specification	Data	
Function	Agricultural spraying / logistics; reconnaissance / inspection	
Type	Unmanned Helicopter	
Configuration	Helicopter (main rotor + tail rotor)	
Payload Options	Camera (custom); laser/mmWave radar	
Battery	LiPo 6S2P 22.8V 22000 mAh	
Max Takeoff Weight	30 kg	
Max Flight Time	25 min	
Max Flight Distance	50km	
Ceiling Altitude	3000 m	Max Payload 16 kg
Control Range	5 km	Dimensions Folded —
Speed	50 km/h	Dimensions Unfolded 1720×400×600 mm
Wind Resistance	11 m/s	Max Ascent Speed 6 m/s
Wheelbase	Main rotor Ø2000 mm	Max Descent Speed 3 m/s

# ENE Commandos

## Long-Range ISR Tri-Sensor UAV



20

20 km

Ultra-Long  
Communication Range



50 min

Maximum Flight Time



Tri-Sensor

EO / IR / Laser  
Rangefinder

**Beyond Boundaries, Ultimate Oversight**

# ENE Commandos

## Core Certifications

Japan Radio Law Technical Standard (Telec) / MLIT RID Technical Specifications (Japan)



### Key Features



#### All-Weather Reliability

IP55-rated protection with a -10°C to 50°C operating range for stable performance in harsh environments.



#### Extended Endurance

Up to 50-minute flight time (with 1kg payload), purpose-built for long-duration missions.



#### Tri-Sensor Imaging

Integrated system featuring 8x optical zoom, 640×512 thermal imaging, and a 600m laser rangefinder.



#### 20km Data Link

Dual-antenna MIMO technology ensures robust, long-range signal transmission and superior connectivity.



#### RTK Precision

Centimeter-level positioning with  $\pm 1.0$  cm + 1ppm horizontal accuracy for high-precision operations.



Border & Coastal Patrol



Search and Rescue



Infrastructure Inspection



### SPECIFICATION

Specification	Data	
Function	Reconnaissance, logistics, special payloads	
Type	Multirotor	
Configuration	6 axles, 6 propellers	
Payload Options	Tri-sensor camera (EO+IR+LRF); terrain radar	
Battery	LIPO 6S1P 22000–25000 mAh (22.2–22.8V)	
Max Takeoff Weight	19.1 kg	
Max Flight Time	50 min (1 kg) / 27 min (5 kg)	
Max Flight Distance	40km	
Ceiling Altitude	4000 m	Max Payload 5 kg (payload example)
Control Range	20 km (data link)	Dimensions Folded 420×600×615 mm
Speed	20 m/s (manual)	Dimensions Unfolded 1568×1710×615 mm
Wind Resistance	12 m/s	Max Ascent Speed 5 m/s
Wheelbase	1200 mm	Max Descent Speed 3 m/s

# ENE Cultivator

## Agricultural Spraying & Spreading Drone



16

**16L Payload**

High-Efficiency Liquid  
& Granular System



**IP67 Waterproof**

Sealed & Washable  
Spreading Module



**Level 6**

(11-12 m/s)  
Wind Speed Resistance

**Precision Farming, Yielding Excellence**

# ENE Cultivator

## Core Certifications

Japan Radio Law Technical Standard (Telec)

MLIT RID Technical Specifications (Japan Remote ID) / Bluetooth SIG Certification



## Key Features



### Dual-Function Versatility

Rapidly switch between a 16L liquid tank and the EPS220 granular spreader to meet diverse agricultural demands.



Pesticide & Herbicide Spraying



### Extreme Durability

IP67-rated spreading system and IPX7 waterproof motors; fully washable for effortless maintenance.



Granular Fertilizer Spreading



### Precision Terrain Following

TFmini Plus Radar ensures stable altitude (0.1m–12m) across complex crop landscapes and uneven terrain.



Cover Crop Seeding



### Smart Ground Control

MK15E Android Controller featuring a 7-inch high-brightness display and a 5km stable transmission range.



### High-Efficiency Power

22000mAh smart batteries paired with TA3200 dual-circuit fast charging to maximize field operational uptime.



## SPECIFICATION

Specification	Data	
Function	Agricultural spraying / logistics; reconnaissance / inspection	
Type	Multirotor	
Configuration	6 rotors	
Payload Options	16 L sprayer; optional camera/gimbal	
Battery	Tattu 12S 22000 mAh (44.4V nominal, 52.2V max)	
Max Takeoff Weight	38.6 kg	
Max Flight Time	22 min (no load)	
Control Range	1.5 / 2.0 km (Remote)	1.5 km / 2.5 km (433/915 MHz module)
Ceiling Altitude	—	Max Payload 16 L tank
Max Flight Distance	10km	Dimensions Folded 1026×581×813 mm
Speed	36 km/h	Dimensions Unfolded 2301×2301×813 mm
Wind Resistance	11 m/s avg (12 m/s gust)	Max Ascent Speed 4 m/s
Wheelbase	1721 mm	Max Descent Speed 3 m/s

**EXPRESS &  
EXCELLENCE**



## Contact Us



### Contact Info

4F, No.21, Lixing Rd., Hsinchu Science Park, Hsinchu,  
Taiwan, Republic of China

TEL : 886-3-6662888

FAX : 886-3-6662999